

Improvements to e-Suitability - paragraph library version 1.3.17 10.9.2015

We are pleased to announce amendments to e-Suitability which take into account budget and other changes applicable to the new tax year.

The most significant changes are:

- New product provider AIG Life to replace Ageus Protect
- Fix to Capacity for Loss paragraph
- Minor layout corrections

New product provider AIG Life to replace Ageus Protect

Ageus Protect has been purchased by AIG and rebranded AIG Life. All references to Ageus Protect have now been removed and replaced with AIG Life. An example of the recommendation text this provider follows:

REASONS FOR RECOMMENDING AIG LIFE AS A PRODUCT PROVIDER

- AIG Life is part of the AIG group of companies which is a large and influential provider of financial products and services.
- It is a specialist provider of life cover and related protection plans.
- It offers a leading range of products of the type that suit your needs.
- AIG Life has a good record for meeting valid claims for payment.
- The premium for the selected product is amongst the most competitive in the market place.
- The financial strength of AIG Life is rated by AKG Actuaries & Consultants Ltd, specialists in this field, as “good”. This rating is a positive indicator of the company’s ability to meet its future obligations under its protection policies.

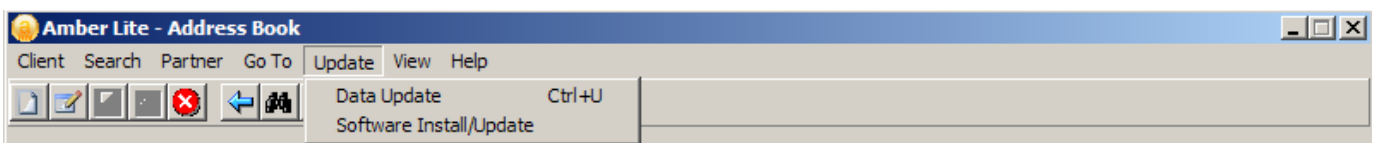
Minor layout corrections

The paragraph library has been reviewed and a number of small layout corrections have been made. In this connection, we are grateful for continued user feedback on any flaws found in the content, the correction of which will take precedence over all other development work.

New paragraph library

Amber Lite

If you have not already updated the software, select the “Data Update” option from the drop down menu which is accessible immediately after launching Report Writer.



Then follow the onscreen instructions.

Adviser Office

If you have not already updated the software, select the “e-Suitability data update” option from the drop down menu which is accessible immediately after launching Report Writer.

